

Scanalyzer

User Guide v1.3.6

Table of Contents

- [1. Introduction](#)
 - [a. About Scanalyzer™](#)
 - [b. User Interface](#)
 - [i. Main Screen](#)
 - [ii. Settings Screen](#)
 - [iii. Automation Screen](#)
 - [c. Support](#)
- [2. Installation](#)
 - [a. Mac OS Software](#)
 - [b. iPhone Software](#)
- [3. Usage](#)
 - [a. Offline Scanning](#)
 - [b. Scanning to a Computer](#)
 - [c. Sending Special Characters](#)
 - [d. Viewing Scanned Information](#)
- [4. Pro Features](#)
 - [a. Configuring Scanalyzer Pro™ Using Quick Configuration Codes™](#)
 - [b. Auto Follow Links](#)
 - [b. Custom Delimiters](#)
 - [I. Partial Table of Special Delimiter Values](#)
- [5. Technical Details](#)
 - [a. Network Details](#)
 - [b. Partial List of Supported Barcode Formats](#)

1. Introduction

a. About Scanalyzer™

Scanalyzer is a barcode reader for mobile devices accompanied by desktop software to receive the scanned information. We wrote it because we couldn't find anything that would do this for us and we found ourselves using costly barcode scanners that are tethered to a computer more than I would like.

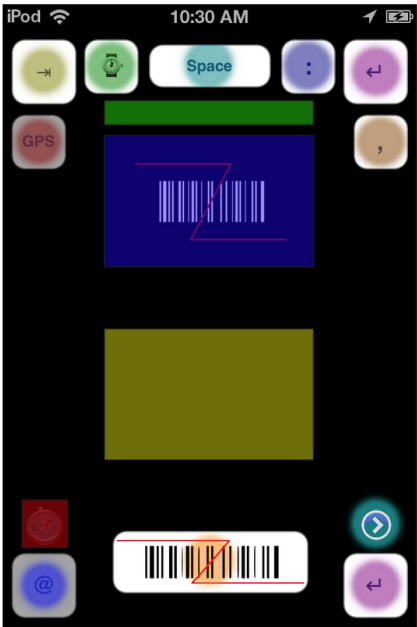
Scanalyzer has evolved to include a powerful feature set that continues to expand.

b. User Interface

i. Main Screen

Feedback Areas

- Picture
- Scanned Data
- GPS Location
- Browser Indicator



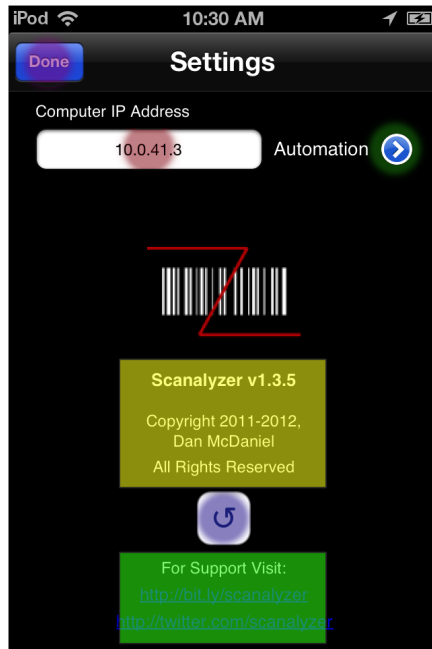
Manual Entry Buttons

- Location
- Tab
- Date and Time
- Space
- Colon
- Return or New Line
- Comma

Other Buttons

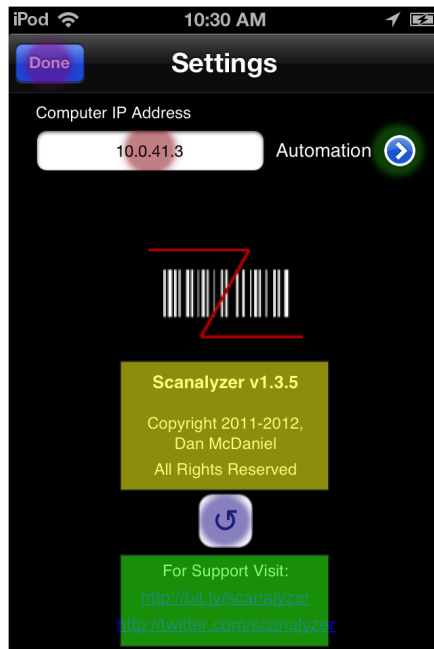
- Scan
- Email
- Settings

ii. Settings Screen



- Buttons and Fields
- IP Address Field
 - Automation Button
 - Reset Button
 - Done/Back Button
 - Version Information
 - Support Information

iii. Automation Screen



- Buttons and Fields
- IP Address Field
 - Automation Button
 - Reset Button
 - Done/Back Button
 - Version Information
 - Support Information

c. Support

Please contact us at scanalyzer@mcdanielar.com or [@scanalyzer](https://twitter.com/scanalyzer) on Twitter with any issues you might have with the software and we will make an effort to resolve them as quickly as possible.

2. Installation

In this section you will find step by step instructions for installing Scanalyzer on all currently supported platforms. More platforms will follow, so check back often.

a. Mac OS Software

On Mac OS, Scanalyzer uses a built in program called python that will receive the scanned information. Follow these simple steps to get started:

1. **Download** the Scanalyzer Desktop Software from the [website](#).
2. Open the file and **copy** the Scanalyzer.app file to your applications folder.
3. **Open** Scanalyzer.app.

Note: The Mac OS software is now running. To quit the software, close the Terminal window or type **Control+c**. Note that your IP address is displayed for easy Scanalyzer configuration.

4. Position your cursor in the document that will receive the scanned information.

b. iPhone Software

1. Download the Scanalyzer app from the iTunes App Store and install it on your device.
2. Open Scanalyzer.
3. Tap on the **glowing circle** in the lower right corner.
4. On the Settings screen, enter the **IP address** of your computer and tap done.

Note: The iPhone software is now configured to send barcodes to the computer.

5. Start using Scanalyzer to change the world!

3. Usage

Using Scanalyzer is meant to be highly intuitive, but it's good practice to write documentation, so we've done our best to document it's use.

a. Offline Scanning

1. Open Scanalyzer on your device.
2. Tap the Scan button at the bottom of the screen.
3. Point the camera at a barcode.

Note: The scanner will automatically read the barcode and display it on the main screen.

b. Scanning to a Computer

1. Start the desktop software.
2. Open Scanalyzer on your device.
3. Tap the Scan button at the bottom of the screen.
4. Point the camera at a barcode.

Note: Again, the scanner will automatically read the barcode, send it to the computer, and return you to the main screen.

c. Sending Special Characters

While you are scanning you may find it useful to separate your scans with character or new line. Scanalyzer provides you with four buttons you can tap to insert these characters.

d. Viewing Scanned Information

When the Scanalyzer returns to the main screen it displays a picture of the scanned barcode as well as a digitized version of the scanned information which you can scroll through if necessary.

4. Pro Features

a. Configuring Scanalyzer Pro™ Using Quick Configuration Codes™

A powerful new feature in Scanalyzer Pro allows quick and automatic configuration of all parameters by simply scanning a specially crafted barcode. These codes are available for purchase and will soon allow the free version of Scanalyzer to be configured with the same settings as Scanalyzer Pro.

To configure Scanalyzer Pro using a Quick Configuration Code (Quick Config Codes™), all you need to do is scan the designated barcode and Scanalyzer will do the rest. A confirmation message will appear, after which the scanner is ready for use.

If a Quick Config Code has expired or is otherwise invalid, a message will be displayed so that corrective action can be taken.

b. Auto Follow Links

The Auto Follow Links feature allows you to do two things:

- Jump to links that are encoded into a barcode
- Jump to links that you build using Custom Delimiters (see below).

To access the Auto Follow Links feature:

1. Open Scanalyzer Pro.
2. Tap on the **glowing circle** in the lower right corner.
3. On the Settings screen, tap the glowing circle next to the word **Automation**.
4. Slide the On-Off switch next to the words **Auto Follow Links** to turn the feature on or off.
5. Tap Done to return to the Settings screen.
6. Tap Done again to return to the Home screen.

b. Custom Delimiters

Using Custom Delimiters allows you to construct a custom block of text using the barcode you scan. You can insert the following types of data into the scan to build a URL or collect information:

- Dynamic Data
 - The Barcode Value <barcode>

- Location Information <gps>
- Timestamps <timestamp>
- Sensor Values (as they become available)
- Static Values
 - URL Prefixes
 - User-Defined Characters or Strings
 - User Identifiers
 - Control Characters <tab>

To access the Auto Follow Links feature:

1. Open Scanalyzer Pro.
2. Tap on the **glowing circle** in the lower right corner.
3. On the Settings screen, tap the glowing circle next to the word **Automation**.
4. Slide the On-Off switch next to the words **Automatic Delimiter** to turn the feature on or off.
5. In the text box below, enter your configuration string.
6. Tap Done to return to the Settings screen.
7. Tap Done again to return to the Home screen.

I. Partial Table of Special Delimiter Values

Use of third party websites and utilities is subject their the terms of service. Shortened links to third party websites and services provide only a shortcut and are subject to change or removal without notice. We will make a reasonable effort to keep these links up to date.

Value	Description	Notes
<barcode>	The barcode value.	Can be used more than once.
<timestamp>	A timestamp corresponding to when the barcode was scanned.	This value is encoded as follows: YYYYMMDD.HHMM. Example: 20110716.1814
<gps>	The best approximation of your location using all available data.	This value is encoded as: LAT.xxxxxx,LON.xxxxxx Example: 37.759321,-122.388111
<tab>	Tab character.	Typically used to tab to the next field.

<deviceuuid>	Device unique identifier.	A permanent unique identifier for each device assigned by Apple. Example: b4d6449e-54ff-4951-bafb-a13b77c61ae3
<altitude>	The best approximation of your current altitude above sea level.	This value is given in meters.
<com.apple.warranty>	Apple warranty lookup.	Scanned data should be a serial number. Example: <com.apple.warranty><barcode>
<com.google.search>	Google web search.	Example: <com.google.search><barcode>
<com.google.maps>	Plots data using Google Maps.	Example: <com.google.maps><gps>
<com.google.products>	Performs Google product search.	Example: <com.google.products><barcode>
<com.bing.products>	Performs Bing product search.	Example: <com.bing.products><barcode>
<com.decodethis.vin>	Decodes a vehicle identifier (VIN).	Example: <com.decodethis.vin><barcode>

5. Technical Details

a. Network Details

TCP Port 8000 (will be user defined in future release)

b. Partial List of Supported Barcode Formats

UPC-A

UPC-E

EAN-8

EAN-13

Code 39

Code 128

Interleaved 2 of 5

QR Code

Support for the following symbologies is planned:

PDF417

DataMatrix

MaxiCode

PostNet

Support is also planned for nonlinear codes, such as those found on the inside of optical disks.